

ZOON

m i m a r l i k
a r c h i t e c t u r e

TURKEY
EUROPE
ASIA
MIDDLE EAST
AFRICA

WHERE WE
WORK

WHO
WE ARE

WHAT
WE DO



WHERE WE WORK



©2023 by Zoon Architecture.

Published in June 2023

Zoon Architecture

Barbaros Mah. Ağaođlu My Prestige No:106

İstanbul / Türkiye

t: (+90) 216 6 888 444

e: info@zoonmimarlik.com

All rights are reserved.

No part of this publication may be reproduced,
stored in a retrieval system or transmitted in any form or by any
means electronic, mechanical, photocopying, recording or any
information storage and retrieval system, without prior permis-
sion in writing from the publisher.



www.zoonmimarlik.com



Zoon Mimarlık



@zoonmimarlik

BEST 100
PROJECTS OF
ZOOON



FOUNDER ZOON



EMRE OZAN ACAR

Emre Ozan Acar was born in Ankara in 1982. He graduated from Yıldız Technical University with a degree in Architecture in 2004 and continued his studies at the same university for his master's degree. In 2005, he was accepted as a graduate student at Vienna Technical University, meanwhile he also completed a bachelor's degree in Business Administration as a second major. After working in various offices in Vienna, Austria for 5 years, completing his master's degree, and starting his doctorate, he returned to Turkey in 2009. From 2003 to 2013, he worked in different companies in Turkey and other countries, where he completed various projects. Since 2013, he has been providing architectural and interior design, project design, implementation, and project consultancy services as the founder of Zoon Architecture. He is currently a lecturer at Medipol University's Department of Architecture, where he teaches and conducts research

FOUNDER ARTZOON



SANEM COŞAN ACAR

Sanem Coşan Acar was born in Ordu in 1984, she graduated from Yıldız Technical University, Department of Architecture in 2008, and started her graduate studies at the same university. In addition to studying Real Estate Management as a second major for his undergraduate degree, she spent one year as a guest student at the University of Konstanz in Germany. Between 2007 and 2018, she worked as an architect and project manager in many brands, including Starbucks (Shaya Holding), Yapı Artı, Garanti Bank. She is the founder of the Artzoon and she carries on his work about commercial real estate consultant within Zoon Architecture and Remax. In addition to her work as a hat designer, she continues her academic career as a guest project lecturer at Kent University Architecture Department.

Zoon Architecture was founded in 2013. It develops not only various projects in different types and scales in Turkey and abroad but also composes an institutional identity together with its architectural and interior design.

WHO WE ARE



It provides service in several fields from small-scale object designs to large-scale building designs. It meets the needs of institutional firms for office, store and exhibition stands.

WHAT WE DO

With an expert staff in the merchandising field, it presents high quality products on equipment and furniture manufacturing to companies worldwide. It also provides worldwide turnkey projects.

ARCHITECTURE

INTERIOR ARCHITECTURE

DESIGN CONCEPT

PROJECT MANAGEMENT

HEALTHCARE SECTOR

CULTURAL SPACES

RESIDENTIAL

RETAILS

HOTEL

EXHIBITION STANDS

ENGINEERING

OFFICE

TURNKEY CONSTRUCTION

FURNITURE MANUFACTURING

SHOWROOMS

DISPLAY CORNERS



19 **V** 69
VERSACE 19•69

eftalya
Balık

OKİSAN
Güvenlik Teknolojileri San.ve Tic.A.Ş

STONEFLY

Wrangler®



JOLLY
International TOURS

SINEGDAĞ
OSMAN SINAĞ
SINEGİTAT

● sunglass hut



Carrefour



CREATIVEBEAUTY
İSTANBUL

KASPERSKY®

LUXOTICA

GROHE

Elginkan

E.L.A.®

Jaluzicam

CARGLASS®

dormakaba

COTECNA

L'UVA
fit **L'UVA**
beauty & academy

ZerafEt

La Cucina di
Aida

AMIR KABIR
PETROCHEMICAL CO.





In this project, the main element that leads the design was the spectacular Istanbul silhouette. Our goal was making the Istanbul view visible through the all living spaces in this two-storey apartment.



OSMAN SINAV HOUSE





Residence
170m²

@ISTANBUL

Designed



With this respect, the kitchen is merged into the living room in the ground floor and designed as an open kitchen; also the bedroom and upper living room is cleared from the non-structural walls.





OSMAN SINAV
HOUSE





Additionally, a large window in the bathroom is created to make the view visible even when the homeowner rests in the bathtub. Natural looking materials are selected as a design concept in general.



Residence
170m²

@ISTANBUL

Designed





This showroom reflects the innovator aspects and products of ECA Serel, has been designed with the new concept including wavy panels colored with inspiring hues of nature. These panels also function as displayers for the faucets and accessories.



ECA SEREL
AKIŞ YAPI SHOWROOM

Showroom
300m²

@İSTANBUL

Designed & Constructed



The showroom is located in the attracted area of Istanbul. The flooring used in the showroom is concrete gray epoxy based which helps the colored units to pop up, and wooden lacquered furnitures.



In order to make full use of the light introduced from the outside, glasses are used in the railings in the interlayer and partition which achieves the permeation of light and the penetration on visual sense.

House Design

@VIENNA

Concept Design





NOVUS HOUSE



This house is designed for 3 membered family who lives outside of Vienna, in the middle of nature. The main purpose of design was to welcome the natural lighting and the forest inside the house .





This exhibition stand proposal was made for Eca Serel, one of the leader sanitaryware company in Turkey, to be located in Unicera 2019 Exhibition, the world's second largest in its field. We aimed to create an appealing design to attract visitors around the space.



Exhibition Stand

CNR Expo

@İSTANBUL

Concept Design





ECA SEREL UNICERA 2019



In the middle of the stand there is another attraction unit on which you can see the seasonal launching products of Eca Serel. This blue iconic box and linear drop lights also represent water effect. The cafe which also functions as an open meeting space has a welcoming ambiance.



To achieve that welcoming and appealing feeling in the stand we decided to use five colorful booths where the products can be displayed. Since these booths have only one solid surface we also achieve the transparency through the stand.





Our main design object for this multifunctional clinic and beauty academy; was creating a holistic design approach yet appear like an art gallery. In this space which offers service especially for women, we were inspired by the wealth of the woman spirit and reflected that into design with diversities.



Beauty Clinic

670m²

@İSTANBUL

Designed & Constructed

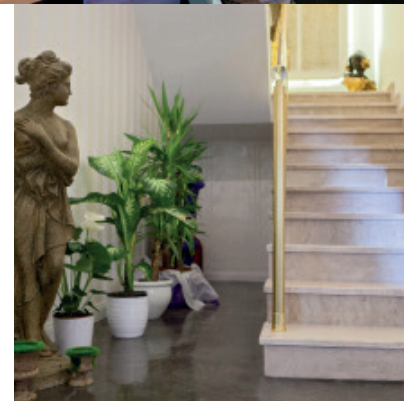




LUVA BEAUTY



Therefore modern art pictures have been placed into classic gold leafed frames; concrete looking epoxy flooring has been combined with the glamorous wallpapers or classic carved furnitures with modern seating areas, dark colored ceiling with white velvet curtains and lastly classic glass chandeliers with incandescent lighting bulbs.





LUVA ACADEMY



In the lounge area we aimed an impressive reception with the artificial flowers numbered as Dr. Elif Colak's previous patients, and sustained that installation through the outdoor wall and ceiling.



Beauty Clinic
670m²
@İSTANBUL
Designed & Constructed



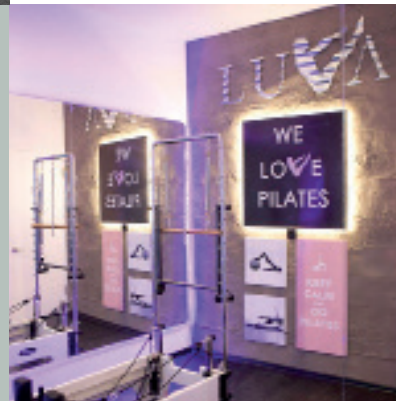
Our aim for this design was reflecting the spirit of this rough sport born in Thailand streets with the harmony of galvanised sheets, raw chains, concrete looking wall coverings, 18 inch wheels, black rubber flooring, artificial grass and bold dramatic colors.



Training Studio
70m²

@İSTANBUL

Designed & Constructed





LUVA FIT





As in the other showrooms of the bathroom sanitary wares company, ECA Serel , we aimed to create dynamic display areas in order to highlight the products. We followed the concept of blue and green tones to maintain spacious environment.





ECA SEREL
NOVAPLAST
SHOWROOM



Showroom
400m²

@ADANA

Designed & Constructed





Exhibition Stand

230m²

@İSTANBUL

Constructed



The Grohe truck, which has come from England, has been set up on the fair area and then our fair stand was made around this truck according to our design.

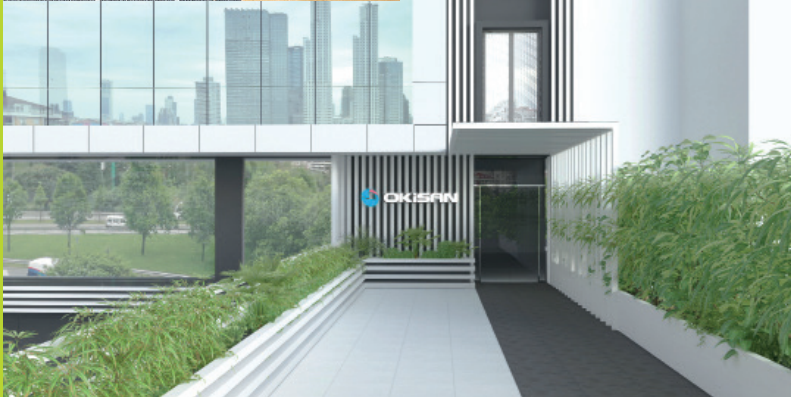


Grohe is the world's leading provider of sanitary fittings and a global brand, dedicated to providing innovative solutions. We were responsible from the construction phase which was finished precisely with customer's pleasure.

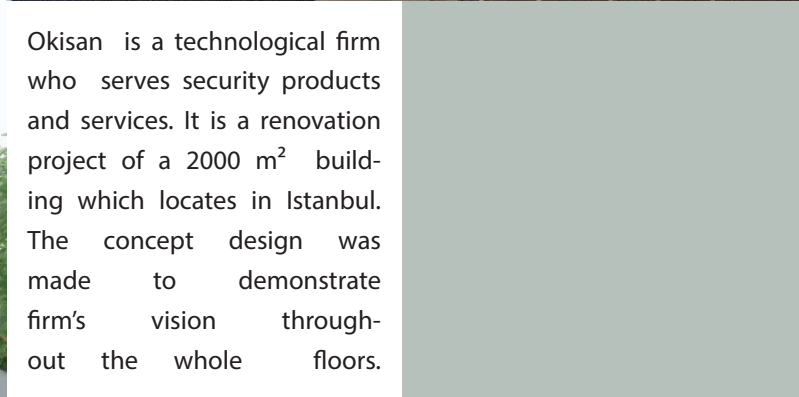


GROHE
UNICERA 2019





Okisan is a technological firm who serves security products and services. It is a renovation project of a 2000 m² building which locates in Istanbul. The concept design was made to demonstrate firm's vision throughout the whole floors.



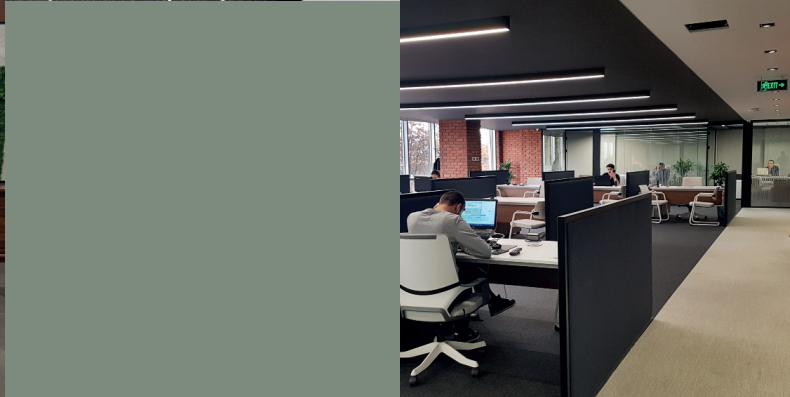
OKISAN



Showroom & Office
2000m²

@iSTANBUL

Designed
&
Under Construction





OKISAN

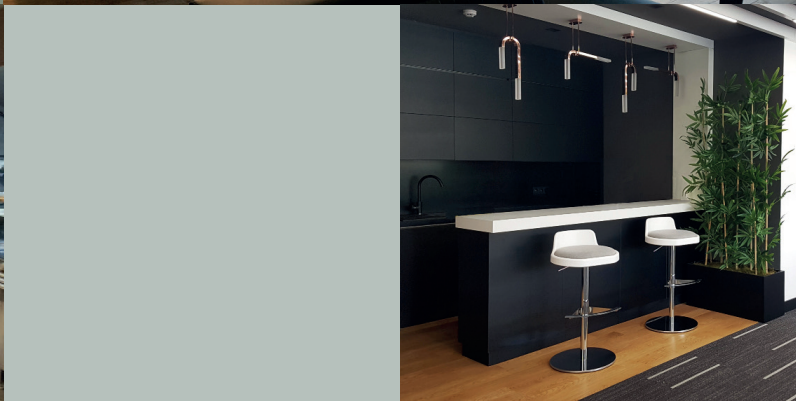


Showroom & Office
2000m²

@İSTANBUL

Designed
&
Under Construction

The building has 5 floors which includes show-room, selling & administration, executive & meeting floor and cafe . The color palette was influenced by the neutral colors which reflects calmness and timeless in the design.





BAR 380



Bar
145m²

@HAMBURG

Designed
&
Constructed



Integrity and operational harmony are very important, especially in outdoor design. Apart from this, revealing and adding commonly used building materials will yield successful results. The elements that we pay the most attention to in this design are; harmony with the environment and using local materials.



We increased the quality of the space by using soft and pastel colors in the interiors. We also created a more friendly and warm environment by using wallmoss and plants.





PEKER EVI EXTERIOR



In the design of Pekar House, we aimed to create an intimate space as well as a modern look. In addition, we have created a functional and compact structure. Stone, wood and glass were used predominantly in the design. We have created a space where traditional and modern architecture are intertwined.



Villa Design

750 m²

@İZMIT

Designed
&
Project Managed





PEKER EVI INTERIOR



The most important element in living room design; The space is spacious. These are; natural light is provided by light color and high ceiling elements. Using dark colors in some specific areas in the space saves the environment from mediocrity and provides originality.





Color harmony is as important a design element as functionality in kitchens. In addition, blending all these with lighting elements increases the value of the space exponentially.

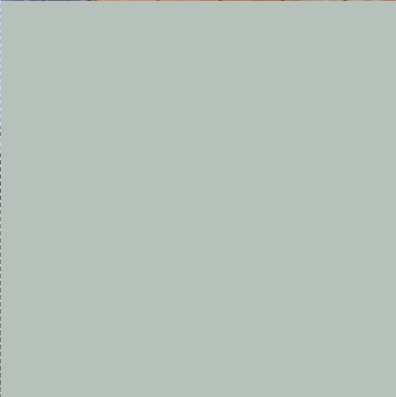
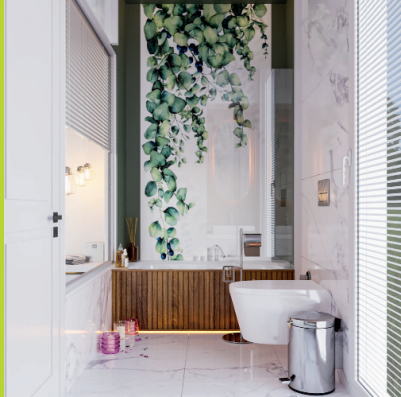
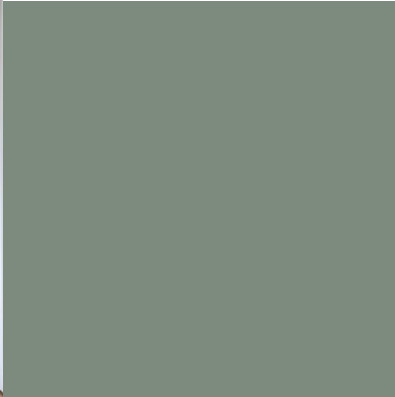


Villa Interior
340 m²

@IZMIT

Designed
&
Project Managed







We used white color, mainly white, which makes the spaces feel wider and more spacious. Another advantage of the white color is that it can be combined with other colors very easily. It is also very compatible with wood.





ADAKÖZ RESTAURANT

We have planned to create more natural and intimate spaces by using plants and wallmoss in our designs. In addition, by using mirrors in narrow spaces, we made the space feel wider.





Restaurant & Bar

175 m²

@HAMBURG

Designed



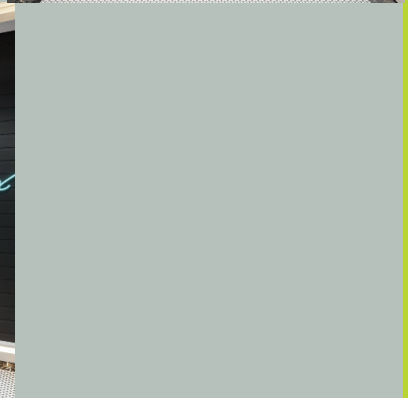


We planned to add a more intimate atmosphere to the space with the ceramic tiles and parquet-like ceramics we used on the floor. Apart from that, we used pastel tones of green, pink and gray colors to animate the space.





The parts we pay the most attention to when designing a corridor are; color selection, directing the circulation and dividing the spaces. In addition, lighting is a design element that must be considered a lot.





SHN HOUSE



House Design
400 m²

@VIENNA

Concept &
Designed



Our aim in this house design located in a town in Austria was to fit the house into the traditional texture of the surrounding. In order to achieve this, rustic stone mesh and slate stone etc. We used traditional building materials such as



ST GYM



Gym
120 m²

@ISTANBUL

Concept
Designed



Apart from modern gyms, we aimed to create movement and vitality as well as functionality. We achieved this liveliness by giving place to bold colors in the space where dark colors are dominant. At the same time, we added dynamism to the space with curvilinear lightings in contrast to the rationality of the wall design.





MOBILETRADE

Elektronic Store
80 m²

@HAMBURG

Designed &
Constructed



We aimed to create a sincere and soft atmosphere in our store where electronic devices will be sold, to spend a long time without getting bored, to trade, to drink coffee and to watch TV.



We designed the WC of the Electronics Store to be modern and functional at the same time. To affect the atmosphere of the environment thanks to the pastel colors we blend with dark colors.



Children Rooms
20m²

@ISTANBUL

Designed &
Constructed



ACR HOUSE 02



At the request of our customer, we designed a stylish and functional girl's room. We added movement to the space with the colorful wallpapers and lighting elements we used. We have also created areas to meet the play needs of children.





We have designed a functional space that will meet the play, rest and study needs of our client's boy. In addition, we made another alternative design with climbing tools for our customer who also wants a climbing area.



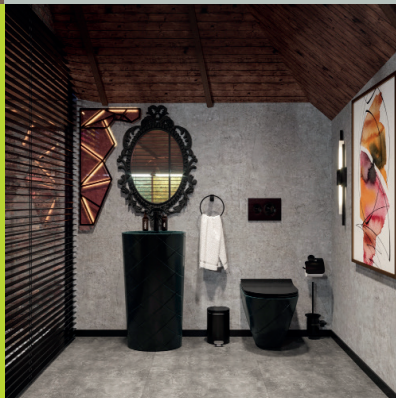


Auction Hall
102 m²

@ISTANBUL

Designed &
Constructed

NOLD SUIT





It has become a place where we blend classical and modern structures in line with the wishes of our customers who want to exhibit antique products. We aimed to create a historical venue with products such as brick and polished solid wood.





Factory Lobby

180 m²

@KOCAELI

Designed



ATIC CHEMICAL



In addition to the light colors we used to preserve the simplicity in the space, a dominant and lively color was used in the entrance area to emphasize it. Considering the integrity of the design, the massive continuity in the consultation was also repeated in the waiting area.





BAĞLAR
BAKERY





Bakery & Patisserie

75 m²

@İSTANBUL

Designed



In line with our client's purposes, we aimed to make the space feel spacious by using transparent surfaces and mirrors in the design. We increased the perception of depth by creating contrast between display units and glass joinery and light colored walls and furniture.





In this stand, which we designed for the company where we produce the sanitary ware, we aimed to create a spatial image by turning to diversity with colors, apart from separating the different areas where they are presented with different functions with dividing walls.

GÜRAL VİT





Exhibition Stand
224m²

Cersai 2015

@BOLOGNA

Concept Designed





İDEVİT



In this stand, which we designed for a ceramic and sanitary ware company, we made the products representing the brand the focal point of the design by associating them with the brand's signature color. We gave importance to compactness and simplicity in design.



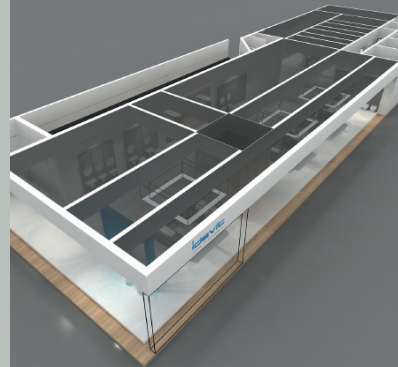


Exhibition Stand
600m²

Unicera 2017

@İSTANBUL

Concept Design





In order to provide simplicity and spaciousness in the space, light pastel colors and amorphous lightings are used in many places. In order to add depth to the space, mirrors are included in the entire space, including the counter section. A perception of depth



SRC COIFFEUR



Coiffeur
215m²
@DUSSELDORF
Consept Design





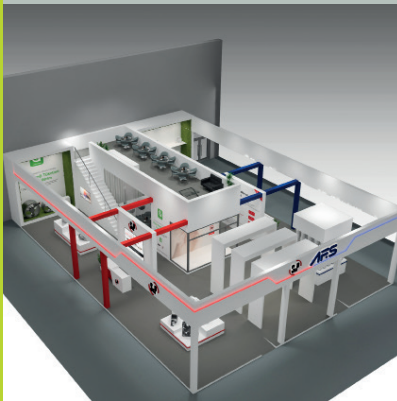
Exhibition Stand

360 m²

Sodex 2019

@ISTANBUL

Concept Design



AFS FLEX



The important point in this fair stand, which we built at the request of our customer, was that the stand was easily accessible from outside. One of the things we took into consideration in the design was to create spaces where visitors could sit and spend time, apart from the exhibition function.

Exhibition Stand
35 m²

Rubber Fair 2016

@ISTANBUL

Concept Design

OMSK CARBON





Villa Interior
65 m²

@HAMBURG

Concept Design

MC HOUSE





At the request of our customer, we designed a simple place in which cream color is used. Our aim was to create a quiet and comfortable sleeping environment as well as to make the place look modern.



Restaurant & Bar

100 m²

@HAMBURG

Designed &
Constructed



At the request of our customer, we aimed to design a stylish and effective space with vibrant colors and good lighting. We created a retro atmosphere with aged mirrors and the pastel color tones we used.



UMAI
Restaurant & Bar





Bar
46 m²

@HAMBURG

Designed



UMAI SPORTS
BAR

At the request of our customer, we aimed to design a stylish and effective space with vibrant colors and good lighting. We created a retro atmosphere with aged mirrors and the pastel color tones we used.



In order to emphasize the area where the launching products are exhibited, the ceiling is raised particularly. With the custom designed lighting fixtures, we managed to make the area to be a focal point.





Catering area is also specially designed with luxury coffee-bar concept. Different Bathroom concepts have been emphasized by different coloured raised flooring.



ECA SEREL
ISH 2019



ISH 2019
@FRANKFURT
Concept Design



This stand reflects the climatization products of ECA, has been designed with spring and autumn concept. The project has 2 main corridors. First one is for displaying spring&summer time products and the second one is for displaying autumn&winter products.



ISH 2019

@FRANKFURT

Concept Design



ECA ISH 2019



For the cafe area we aimed to create a cozy place where the customers can give a joyful break during their visit. The colors were chosen to provide a spacious feeling. With wallpaper covered walls and comfortable furnitures, customers can feel themselves like at home at the coffee-bar area.



STUDENT RESIDENCE





Hospitality
30m²
@TBILISI
Concept Design



In this one-thousand-roomed dormitory project that we designed for Dekon Construction, our main target was to show that a great design does not always requires big budgets. With the right color and texture choices, a pleasant dorm room can be created with proper quality and reasonable priced materials.



Exhibition Stand
300m²

RHO FIERA

@MILANO

Designed & Constructed





ECA SEREL MOSTRA CONVEGNO 2018



In this exhibition area for heating systems, our leading point is to reflect how ECA products bring coziness into the area. With this respect, the cafe is designed just as your living room with comfy sitting groups for 2-3 people, electrical fireplace, decorative floor lamps and wallpapers.





TWIN HOUSE



This twin houses are designed to respond the needs of two close families who have similar living styles. The garden and the pool area was designed as social spaces to bring together all family members.



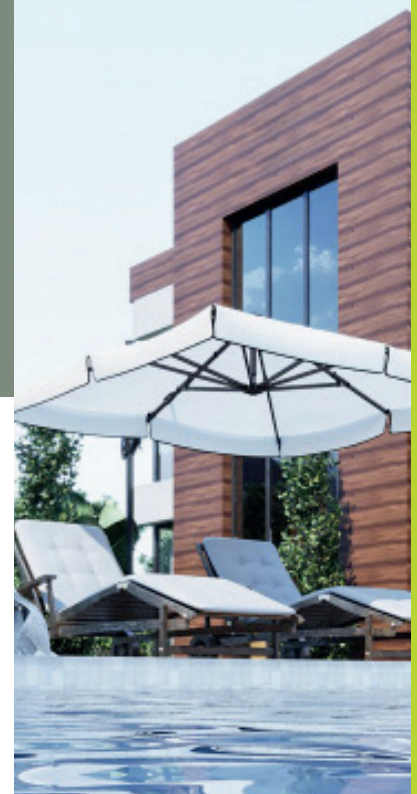
House Design

@VIENNA

Concept Design



In order to make full use of the light introduced from the outside, glasses are used in the railings in the interlayer and partition which achieves the permeation of light and the penetration on visual sense.





The stand design has been achieved by spacious white flooring, raised floors and wooden lacquered furnitures. The color scheme has been derived from nature. The drawings on the facade which are exclusively designed for the brand.



Exhibition Stand
750m²

CNR Expo

@İSTANBUL

Designed & Constructed



ECA SEREL
UNICERA 2018



This project, which is composed of 750 m2 total area separated as 450m2 showroom and 300m2 cafe, has been designed with the principal of leading all visitors coming from the main entrance directly to the stand.



We have covered the restroom walls with light coloured wall-paper, which was looking quite gloomy before because of the three toned brown colors. We also covered the whole built-in wardrobe with mirror, placed crosswised recessed liner led lighting and achieved a much more eased space.

Office
70m²
Ağaoğlu My Prestige

@ISTANBUL

Designed & Constructed





SHEYDI DIET AND NUTRITION CONSULTATION CENTER



In order to create an energetic space just as Ms. Seyma's personality, we painted the walls with diagonal dramatic colors. Due to the mirrors covered from floor to the ceiling, we made the lounge area and visiting room seem bigger than they are while increasing the lighting level.





We were asked to design modern hotel project by using containers in an Iceland village which gives opportunity to live the famous northern lights experience and the nature of Iceland.



Hotel Design

@REYKJAVIK

Concept Design



CONTAINER HOTEL
REYKJAVIK

ICELAND



The containers are designed and planned to be produced in Turkey, by Zoon Architecture. The units are planned to be finished with all details in Turkey and then transported to Iceland via shipping.



CONTAINER HOTEL VIK I MYRDAL

ICELAND



The containers are designed and planned to be produced in Turkey, by Zoon Architecture. The units are planned to be finished with all details in Turkey and then transported to Iceland via shipping.

We were asked to design modern hotel project by using containers in an Iceland village which gives opportunity to live the famous northern lights experience and the nature of Iceland.



Hotel Design
@VIK I MYRDAL
Concept Design

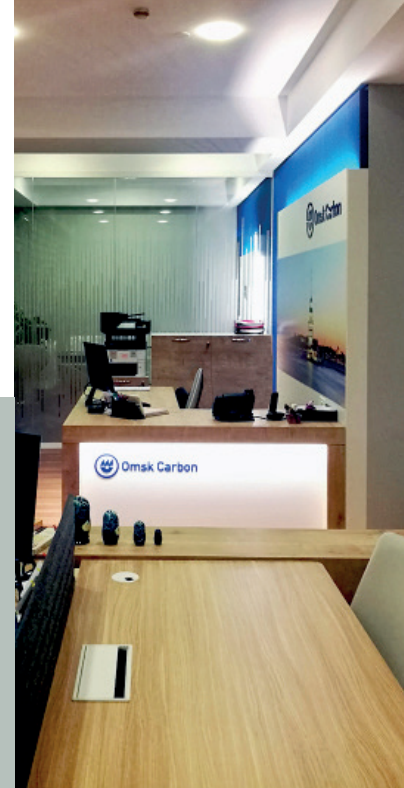


OMSK CARBON
OFFICE





Omsk Carbon is one of the leading manufacturers of carbon black in the world. Omsk Carbon institutionalization of the brand design we do for the Turkey office has brought to the forefront.

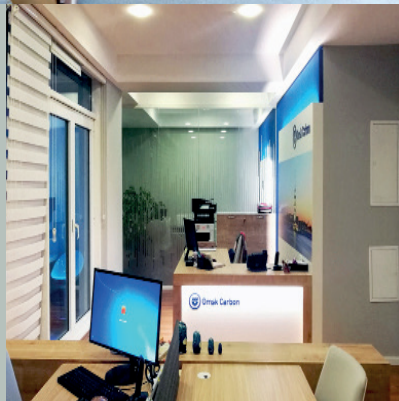


Office

150 m²

@ISTANBUL

Designed & Constructed



In addition, the design has been given a simple look by using decorative illuminated panels and white furniture in the main color of the brand.



Residence
150m²

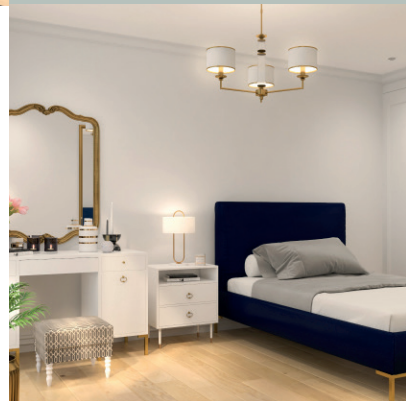
Ağaoğlu Andromeda Gold

@İSTANBUL

Designed & Constructed



In this project, we started off with the avangard but not eye-straining design aspect and especially by paying attention to the color harmony.





All choices of floor coverings, wall paintings, textile products and furnitures embraced that design concern and as a consequence an elegant harmony have been achieved successfully with client's satisfaction.



DRN HOUSE



ELIF COLAK
HOUSE





In this project that we blend the exposed concrete with classical furniture and accessories, the simplicity is balanced with the luxury.



Residence

Levent Loft

@iSTANBUL

Designed





The main purpose of this children room design was to use natural wood material, and to create a functional Montessori style room in such a small area.



Residence
120m²

@ISTANBUL

Designed & Constructed





The corridor of the house is designed as an art and photo gallery with rhythmic and different sized frames. Track lightings and wall colours are chosen to make a focus on the frames.



ACR HOUSE





Inspired by our customer's colorful personality, we aimed to design her apartment as spatial, modern and energetic.

Residence
120m²

Brooklyn Park

@İSTANBUL

Designed & Constructed





MERVE ÇOLAK DERELİ HOUSE



On entering the living room throughout kitchen, we are encountered a peaceful combination; a strong flavor of vibrant yellow and natural tones.

MY COACH & FITNESS
STUDIO





Training Studio
80m²

@İSTANBUL

Designed & Constructed



Predominately red color is used in this private fitness center in order to reflect the energetic spirit of the space. For this purpose; floor ceramics of the wet area, wall paints and furnitures are selected in red color. Whereas the rest of the walls are painted in black to compliment the red color.



This showroom reflects the innovator aspects and products of ECA Serel, has been designed with the new concept including the solar powered lights and customized exhibition units.



Showroom
550m²

@İSTANBUL

Designed & Constructed

ECA SEREL
AKSIMUM SHOWROOM



Modern looking spaces has been achieved by Pandomo flooring, raised floors and metal units which are exclusively designed for the brand.





This showroom reflects the innovator aspects and products of ECA Serel, has been designed with the new concept including the solar powered lights and customized exhibition units.





ECA SEREL
AKSIMUM SHOWROOM



Showroom
550m²

@iSTANBUL

Designed & Constructed



Modern looking spaces has been achieved by Pandomo flooring, raised floors and metal units which are exclusively designed for the brand.



This showroom reflects the innovator aspects and products of ECA Serel, has been designed with the new concept including wavy panels colored with inspiring hues of nature. These panels also function as displayers for the faucets and accessories.



ECA SEREL
DOST BOYA SHOWROOM

Showroom & Office

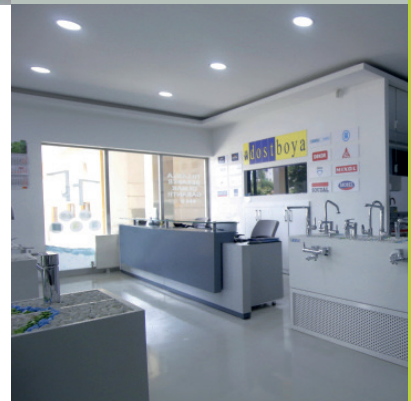
150m²

@ANKARA

Designed & Constructed



The showroom has been located in the attracted area of Ankara. The flooring used in the showroom is concrete gray epoxy based which helps the colored units to pop up, and wooden lacquered furnitures.





Residence

@İSTANBUL

Concept Design





The interior design is simple and lively, in which the materials and the furnitures are warm and graceful. The open kitchen makes the space clear and bright. In the dining hall, sitting room and the hallway, much use of woods links the spaces together.



BK HOUSE





Office

@ISTANBUL

Designed





ALIŞIROĞLU
LAW FIRM



We were asked to renovate a law firm interior in order to respond client's needs . The materials and the colors used create an elegant and calm environment out of the ordinary feeling of general understanding of a law firm .



We were asked to do renovation of the conference room for Toyota Head Office, in Istanbul. The main purpose was to design stage area by using neutral tones on the wall and on the floor while we create a balance by creating wavy effect on the ceiling .





Conference Hall

@ISTANBUL

Concept Design



TOYOTA HEAD
OFFICE





EMAS
SODEX 2018



Exhibition Design

@İSTANBUL

Concept Design





This fair stand concept design was made for sanitaryware brand for Eca Serel to be located in Ish 2019 . We created repetitive boxes which can be used as display stands for the brand's valves product. White color is chosen as main color to create a neutral background for the products.



ECA SEREL
THE BIG5 2017



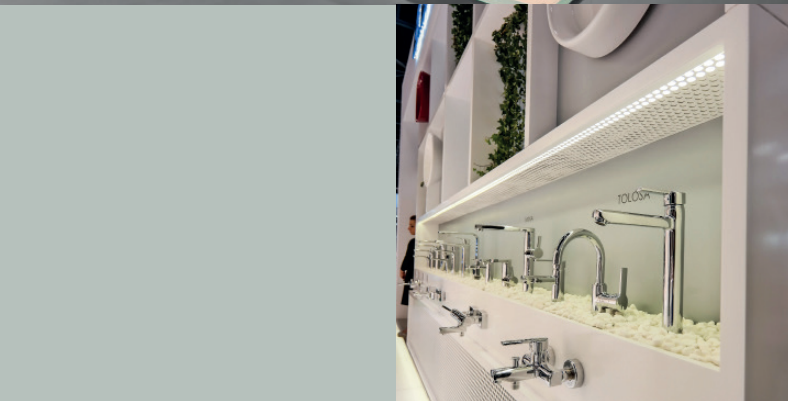
Exhibition Stand
100m²

Dubai World Trade Center

@DUBAI

Designed & Constructed





In this design, varied bathroom settings and products have been displayed on independent wall surfaces. Cafe area has been separated from the hall and exhibition space with the decorative ropes and modular furnitures.





This four side accessible stand has been designed with the idea of leading all exhibition visitors through the stand.



Exhibition Stand
130 m²

Parc des expositions Paris
Nord Villepinte

@PARIS

Designed & Constructed





ECA SEREL IDEOBAIN 2017

In order to make the stand clearly visible, rhythmical bearers have been used for the great effect of transparency; whereas exclusive spaces have been created by the customized exhibition units.





Exhibition Stand
200 m²

Tüyap Expo Center

@İSTANBUL

Designed & Constructed





In this design of 200m2 exhibition stand, divided corridors have been created in order to provide various areas for the mounted door products. Additionally, attractive focal points for the visitors are created by decoratively lighted products.



DORMAKABA TURKEYBUILD 2017





The stand design has been achieved by spacious white flooring, raised floors and wooden lacquered furnitures. The focus point of the project was the aquarium area which also has a function to display new products.



ECA SEREL
UNICERA 2017

Exhibition Stand
750m²

CNR Expo Center

@İSTANBUL

Designed & Constructed



This project, which is composed of 750 m2 total area separated as 450m2 showroom and 300m2 cafe, has been designed with the principal of leading all visitors coming from the main entrance directly to the stand.





KRONFUSS HOUSE





For this family of four, who live in Wien, we created a modern home with wide open windows and garden access. With the huge gallery space, high windows and minimum partition walls; we achieved an uninterrupted view.



House

@VIENNA

Concept Design



This two-storied stand reflects the climatization products of ECA, has been designed with spring and autumn concept.

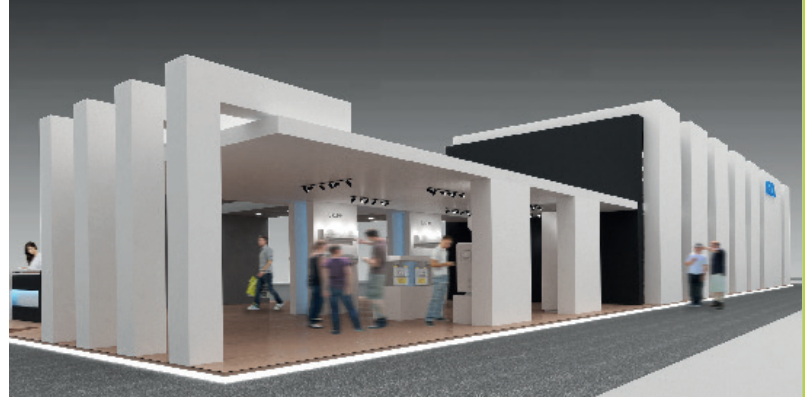


Exhibition Design

@İSTANBUL

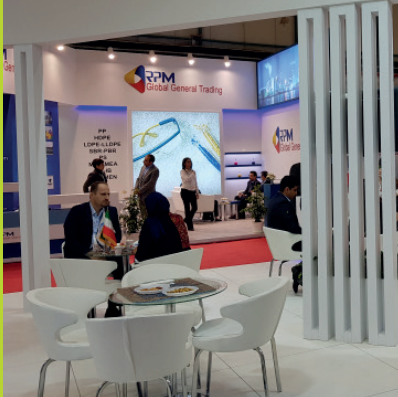
Concept Design

The project has one main corridor; one side is for displaying spring&summer time products and the other side is for displaying autumn&winter products. Whereas the second floor is designed as a catering area.



ECA SEREL
SODEX 2017





Curved girders and big sized light boxes are the main components of the stand. Blue and white colours of the stand are based to the logo of the firm. Designed by our Dubai based partner firm and constructed from us.

A.R.P.C. SHAZAND
PETROCHEMICAL CO.
PLASTEURASIA 2017



Exhibition Stand
80m²

Tüyap Expo Center

@İSTANBUL

Constructed





JPC PETROCHEMICAL CO.
PLASTEURASIA 2017





JPC is one of the biggest firms of petrochemical industry and completely design of this stand is belong to our partner firm in Dubai. Co-operation of this project is finalized with customers satisfaction.



Exhibition Stand
150m²

Tüyap Expo Center

@İSTANBUL

Constructed



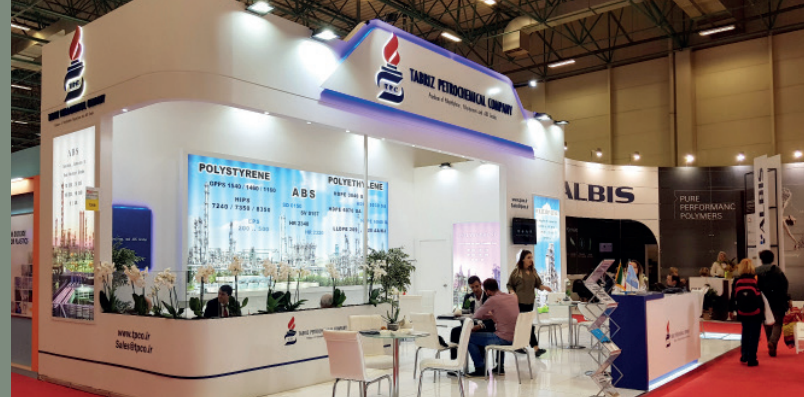


Exhibition Stand
70m²

Tüyap Expo Center

@İSTANBUL

Constructed





Curved corners and mix sized light boxes are the main components of this 70 m2 stand. Designed by our Dubai based partner firm and constructed from us



TABRIZ
PETROCHEMICAL CO.
PLASTEURASIA 2017



CARGLASS HEAD OFFICE
2017



Head Office
@İSTANBUL
Concept Design



Carglass is one of the world's leading vehicle glass repair and replacement service providers. It was important that the design represent brand's identity. The materials and colors used creates continuity through the whole space. The usage of red and yellow lines creates a strong flow.



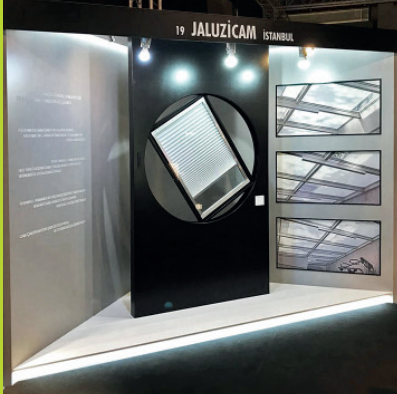


Exhibition Stand
İstanbul Expo Center
@İSTANBUL
Concept Design

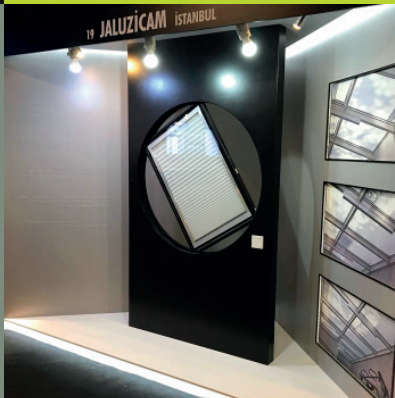
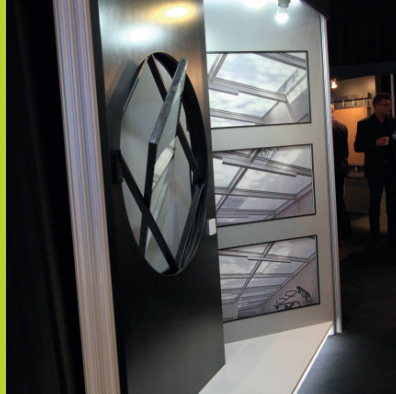


HONDA
MOTOSHOW 2017





JALUZİCAM
ARCHITECT@WORK 2017



Exhibition Stand
İstanbul Expo Center
@İSTANBUL
Designed & Constructed





DORMAKABA
ARCHITECT@WORK 2016



Exhibition Stand
İstanbul Expo Center
@İSTANBUL
Designed & Constructed



For one of the sector's biggest fair, Architect @work. We are asked to design a functional stand which is consisted of 9m² for Dormakaba who provides access control and security solutions on the global market.

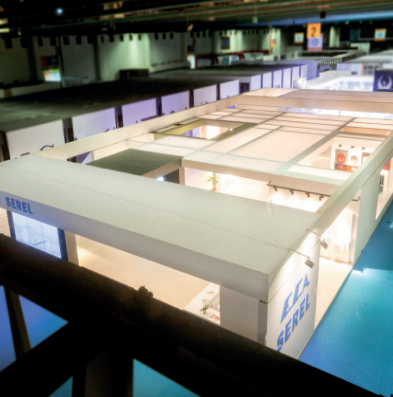


Exhibition Stand
300m²
CNR Expo Center

@ISTANBUL

Designed & Constructed





ECA SEREL
UNICERA 2016

750m2 total stand area has been achieved by 1m x 1m dimensioned white flooring, raised floors and wooden lacquered furnitures. The stand has been designed with the principal of leading all visitors coming from the main entrance directly to the display units and than 300m2 cafe area.





ECA SEREL UNICERA 2016



This Stand reflects the innovator aspects and products of ECA Serel, has been designed with pure white walls, very light-weight and permeable roof nets and lacquered panels as displayers for the faucets and accessories.





Exhibition Stand
300m²
CNR Expo Center

@ISTANBUL

Designed & Constructed





In this design, varied products have been displayed on independent wall surfaces and lacquered display units. Cafe area has been separated from the hall and exhibition space with planted modular pots.





Exhibition Stand

100m²

Dubai Worl Trade Center

@DUBAI

Designed & Constructed



ECA SEREL
THE BIG5 2016





JOLLY TOUR
EMITT 2016





Exhibition Stand
400m²

Tüyap Expo Center

@İSTANBUL

Concept Design



AMIR KABIR
PETROCHEMICAL COMPANY
PLASTEURASIA 2016



Complete design of this 150 m2 stand is belong to our partner firm in Dubai. As an Iranian personality of the customer firm. classical Persian style patterns, cnc cuts and all details are manufactured with high quality by us.



Exhibition Stand
150m²

Tüyap Expo Center

@İSTANBUL

Constructed





Complex Entrance

@ISTANBUL

Concept Design

DOĞUŞ AUTOMOTIVE





This was a renovation project for Doğuş Automotive, and the main entrance is designed to show all the sub-brands and the power of the company as well. Metal and wooden surfaces are used together in this project.





Office
1600m²

Üsküdar

@İSTANBUL

Designed & Constructed



NISSAN HEAD OFFICE



We designed and constructed the car display unit outside and the parking lots for the headquarter of Nissan Turkey, multinational automobile manufacturer.





ZERAFET RESTAURANT
ENTRANCE



Restaurant Entrance

60m²

Etiler

@İSTANBUL

Designed & Constructed





ZERAFET RESTAURANT

Restaurant

250m²

Etiler

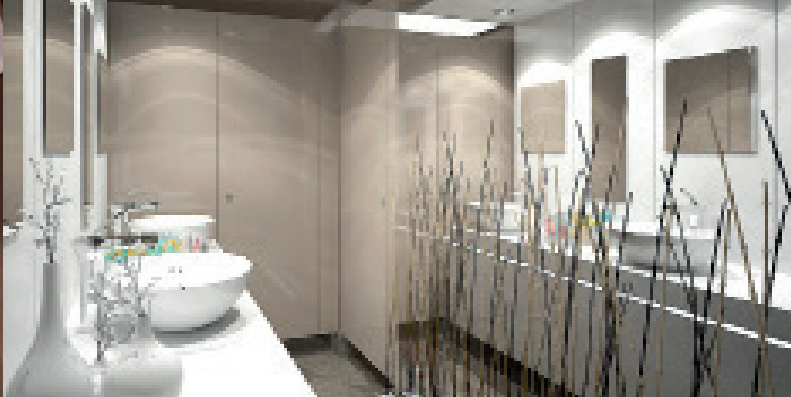
@İSTANBUL

Concept Design



In this steak-house, our design aspect was to make the space to be felt elegant and luxurious beginning from the entrance. The materials were the natural stones and various elements in grey-anthracite colors.



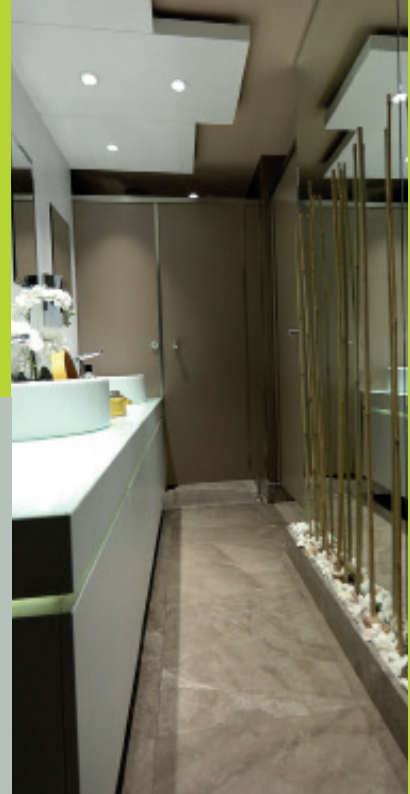


In this space which is one of the famous fish restaurant in Istanbul, we have renovated the wet areas and the foyer. By using large mirrors on the walls, we have created a more spacious feeling.





EFTALYA BALIK
FISH RESTAURANT



Restaurant

Arnavutköy

@İSTANBUL

Designed & Constructed





Exhibition Stand

Istanbul Expo Center

@İSTANBUL

Concept Design



HONDA
MOTOSHOW 2016





VERSACE 1969 SHOWROOM



The main design object of this store is to reflect the luxury and quality of the brand Versace. With this respect, black marble that recalls the luxury is selected, as well with the leather Chesterfield sofa and brass railing.



A decent balance with the luxury and simplicity is achieved with the plain white walls and hidden led lighting while making the store more spacious.



Retail Store
Mall Of Istanbul
@İSTANBUL
Concept Design



Exhibition Stand

CNR Expo Center

@ISTANBUL

Concept Design





This fair stand concept design was made for Versace 1969 to be located in Aymod 2016 Fair. It was important that the stand reflects brand's identity as . The transparent material covering the facade of the stand creates an appealing feeling for the customers.

VERSACE 1969
AYMOD 2016





Retail Store

150m²

Şişli

@İSTANBUL

Designed & Constructed



DISTANBUL SHOWROOM



This wholesale store stands out with the specially painted and polished shoe making counters that is used as displaying units and meeting tables. In a space that is as low-ceiled and narrow as it is, we have created a striking atmosphere with the dramatically colorful furnitures.





In this store that is designed by gathering the different styles together, we have created individual displaying units for different types of shoes. We also renovated the antique chairs and shoe making counters by painting them specially.



Retail Store
250m²

Şişli

@İSTANBUL

Designed & Constructed





By using them in the same space with the Italian brand moden chairs and sofas, we have referred to the rooted history of the brand yet innovator interface.

STONEFLY SHOWROOM ŞİŞLİ





STONEFLY SHOWROOM TEŞVİKİYE



A decent district like Teşvikiye required a design that is as decent and exclusive as itself. With this object in mind, the marble facade is designed coherently with the historical context of the street, as well with the wrought iron signboard that is specially created for the Teşvikiye store.





Retail Store

160m²

Teşvikiye

@İSTANBUL

Designed & Constructed



A spacious and product oriented displaying strategy is applied by using special patterned wallpapers, bespoke shelves made in PVC pipes for displaying the hand-made shoes, rusted metal panels and solid wooden units.





In this small store, we have aimed to reflect the Italian simple yet chic style. We created a spacious layout and used white colors both for walls and displaying units.



STONEFLY SHOWROOM
FLORYA



Retail Store

100m²

Florya

@iSTANBUL

Designed & Constructed



The space is renovated with the custom made displaying units that reflects the Stonefly brand.



STONEFLY SHOWROOM ANKARA



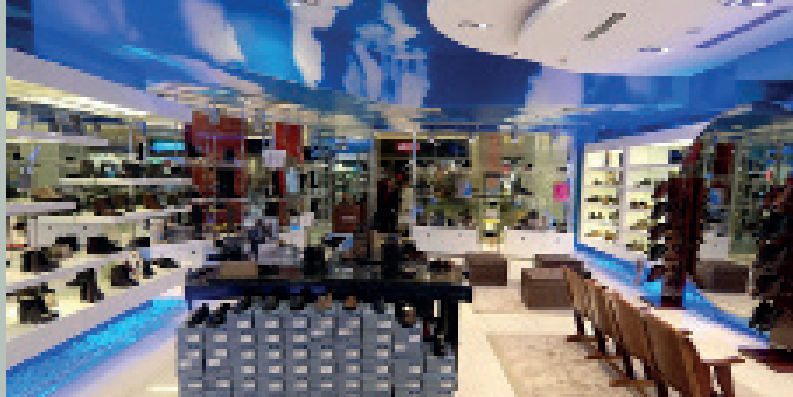
Retail Store

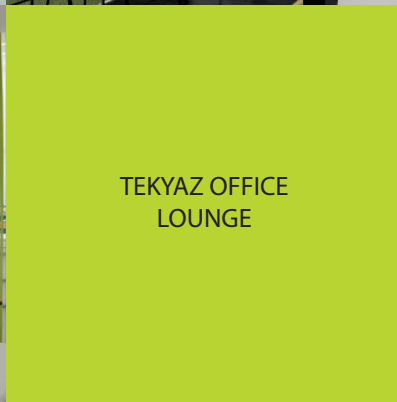
120m²

Gordion Mall

@ANKARA

Designed & Constructed





TEKYAZ OFFICE
LOUNGE



Office
@iSTANBUL
Concept Design





Exhibition Stand

Kaya Palazzo

@ANTALYA

Concept Design



ECA SEREL EXHIBITION
KAYA PALAZZO 2016



It was an exhibition project which will is located in a hotel lobby in Antalya. The concept was creating a flow between booths with the help of color chart inspired by the seven colors of rainbow. One of the significant feature of the project was using colorful pallets as display units.





SCHUBERT HOUSE



Villa Design
@VIENNA
Concept Design



House Design
@VIENNA
Concept Design



The main purpose was to maintain the traditional Austrian housing style to the design. From the porch, sitting room, living room to dining room, it's been used the mixture of wood and stone through out the design.

HAYDN HOUSE



OMSK CARBON
RUBBER FAIR 2016



Exhibition Stand

Tüyap Expo Center

@İSTANBUL

Concept Design



TEKYAZ
MAKTEK 2016



Exhibition Stand
Tüyap Expo Center
@İSTANBUL
Concept Design





ECA SEREL SHOWROOM
COLOGNE



Showroom

@COLOGNE

Concept Design



Pure white, rhythmic, illuminated corian display units for the products, natural wooden floors, barrisol ceilings and reflections of barrisols on the floors were the main components of the project.



ECA
ISH 2015



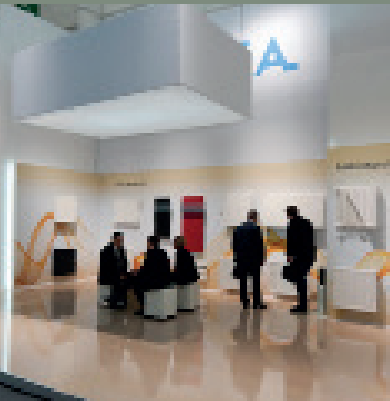


Exhibition Stand
205m²

Frankfurt Fair and
Exhibition Centre

@FRANKFURT

Designed & Constructed

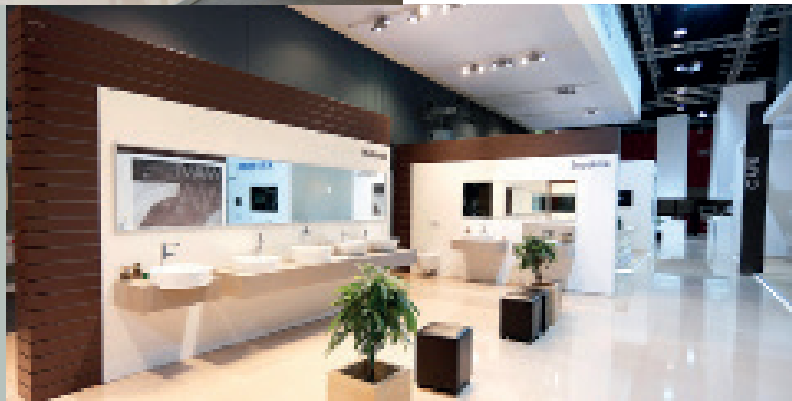


In this two-storey stand; upper floor is designed as a cafe, whereas the ground floor is dedicated to the exhibited products. the 20-meter-length illuminated advertisement area.





In order to use the maximum height of the area, ceiling suspended truss system has been established while the impressive light beams provide the products shine through.



ECA SEREL
ISH 2015



Exhibition Stand
340m²

Frankfurt Fair and
Exhibition Center

@FRANKFURT

Designed & Constructed



Different zones for the catering
area and meeting rooms have
been emphasized by easily
accessible raised flooring.



Residence
@İSTANBUL
Concept Design



The rooms have the same interest in color expression to create a calm resting place where one can leisurely enjoy time.

TEKDURMAZ HOUSE



In view of the client's needs of living, we made the concept design for a 3 membered family house in Istanbul. The house consists 2 main bedrooms, 1 guest room, 1 study room and 1 bathroom.





We were asked to design a bedroom in an attic of a two storey house, located in Istanbul. Inspired by casual luxury, we aimed to create not just a bedroom but also a living space with a reading corner. Under the tone of gray, we added brass, emerald color to enrich the ambiance.



Residence

@İSTANBUL

Concept Design



MUSTAFA ERTEN
HOUSE





Exhibition Stand

96m²

Dubai World Trade Center

@DUBAI

Designed & Constructed



ECA SEREL
THE BIG5 2015



In this design, products have been displayed on partly extruded semi-wall surfaces and lacquered display units. The stand has been designed with the principal of leading all visitors from all sides of the booth.





Exhibition Stand

@BOLOGNA

Designed & Constructed





ECA SEREL
CERSAI 2015



For this project we aimed to create traditional and welcoming environment by using wood, metal and plants . The food concept was coming from a city in Turkey called Mardin which is very well known with its traditional food.



Bakery
90m²

@ISTANBUL

Designed & Constructed



GÜNEY BAKERY





The design aim of this Sariyer based based project, is to show modern face of bakery store with simple materials.



E.C.A. SEREL



ECA SEREL
CERSAI 2014



Pure white illuminated corian and natural wooden materials are used as walls and displayers for the products. Light-weighted and permeable nets are used on ceilings.



'Rule the water with ECA' was the motto of the brand and the design of the stand is inspired by the flowing of water.



Exhibition Stand
@BOLOGNA
Concept Design





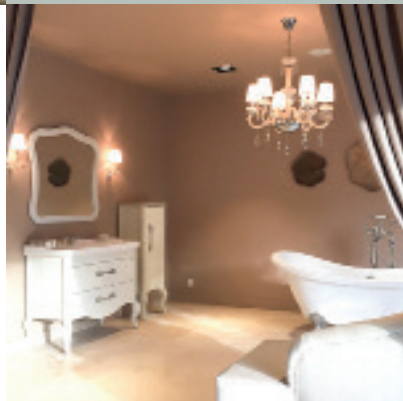
Showroom
200m²

@CAMBODIA

Designed & Constructed



As an answer to our question of how it is possible to display a wide range of product without overwhelming anyone, we have found the solution in creating a rhythm using repetitive displaying units.





ECA SEREL SHOWROOM
CAMBODIA




CREATIVEBEAUTY
ISTANBUL



Our client Creative Beauty is a hairdresser salon which is located in the central of Istanbul. Since the customers may spend a lot of time here It was important to create a place of peace and tranquil. We achieved that with soft gray walls, white furnitures with a touch of pinky shade.





CREATIVE BEAUTY



Beauty Saloon

110m²

@ISTANBUL

Designed & Constructed





A.G. HOUSE



Residence
200m²

@ISTANBUL

Designed & Constructed





For our customer who got bored of his/her 30-year-old outdated home, we created a lively, modern and elegant design that has a beautiful sea view.





Exhibition Stand
60m²

Istanbul Modern

@İSTANBUL

Designed & Constructed





SUNGLASS HUT FASHION WEEK 2014



Lounge and display corner areas of Luxottica was designed and constructed by us for Istanbul Fashionweek 2014. The main aim of the design was to exhibit products and to present the brand in the magnificent view of Bosphorus.

CARREFOURSA
BOOKSTORE





Bookstore

CarrefourSA İçerenköy

@İSTANBUL

Concept Design

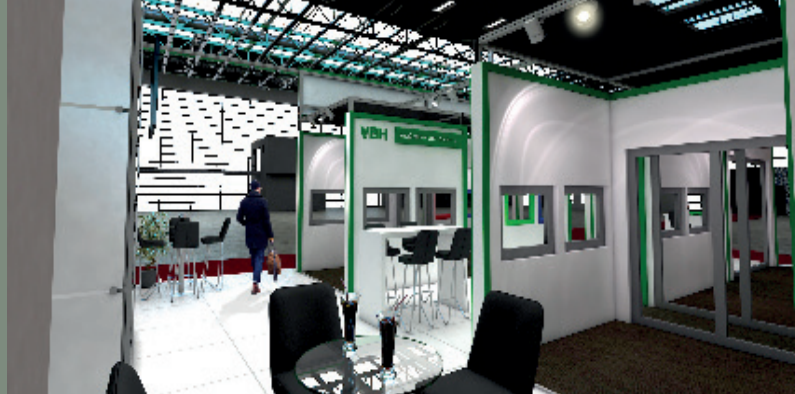


This design is created for the renovation of the stationery departments in CarrefourSA stores. What our client desire is to execute a design that overcomes the prejudice like CarrefourSA sells promotion boks only. In fact, they sell the latest published books as well.



VBH
AVRASYA PENCERE





In this budget-oriented modular design of 126 m² exhibition stand, different corridors have been created in order to provide various areas for the mounted door, window and different products of VBH.

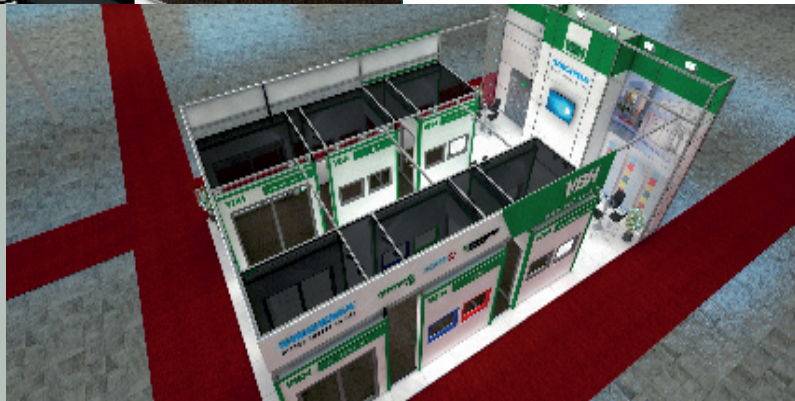


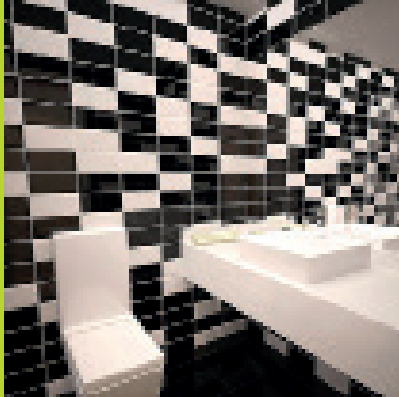
Exhibition Stand

126 m²

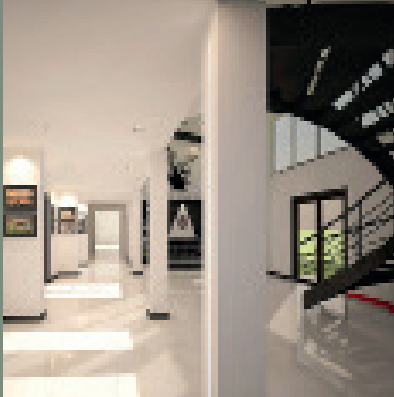
@ISTANBUL

Designed





What required for Nevzat Demir Social Complex is the players to be accommodated in comfy rooms and visitors to feel the glorious history of Beşiktaş in the lobby. Therefore black and white colors are used in the lobby and soft colors in the player's rooms.

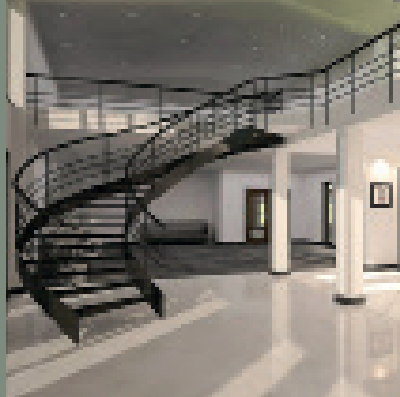


Social Space

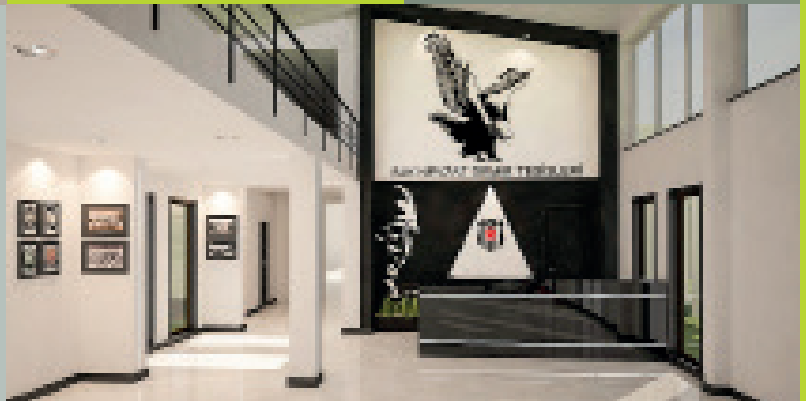
Beşiktaş

@İSTANBUL

Concept Design



BJK NEVZAT DEMİR
SOCIAL COMPLEX





Retail Store
@TEKİRDAĞ
Concept Design



ÇAĞRI JEWELRY





For this project we created a luxurious and appealing concept for a local jewelry brand showroom located in a close town to Istanbul. We used black and white as the main colors which will highlight the shiny jewelries.





EMPIRE JEWELRY



Retail Store

Atatürk Airport

@İSTANBUL

Concept Design





We are asked to construct an exhibition stand for Cotecna, leading provider of testing, inspection and certification services. The stand is made through modular elements which makes easier to install the stand .



COTECNA
MADEN 2018



Exhibition Stand
9m²

Tüyap Fair Center

@İSTANBUL

Constructed



WRANGLER
AYMOD 2013



“Wrangler footwear offers a wide range of styles; whether it is warm leather boots in winter or colourful canvas shoes in summer, Wrangler has something to suit you” was the brand’s motto and our design origin as well.





The distressed wood displaying units are used to remind the durability of the products, the facade wall is covered with the rusted metal sheets, the ceiling is constructed with the solid wood beams and the floor is covered with the artificial grass to create an outdoor feeling.



Exhibition Stand
60m²

CNR Expo Center

@ISTANBUL

Designed & Constructed



For this small fair stand we have aimed to reflect the Italian simple yet chic style.



Exhibition Stand
60m²

CNR Expo Center

@İSTANBUL

Designed & Constructed



STONEFLY
AYMOD 2013





LA CUCINA IL AIDA

Food Kiosk
30m²

Brandium Mall

@İSTANBUL

Concept Design





With the brick walls, solid walnut furnitures, soft and hidden lights, and the harmony of the black&red colors, we have achieved the atmosphere that our client wished in the first place.

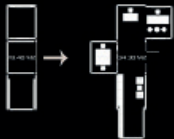


Our design origin was to create a small but cozy Italian restaurant. With this respect, we have used the warmer colors and natural materials for the signboard, furnitures and claddings.

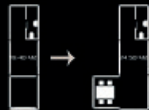




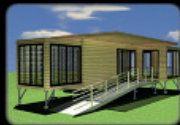
BOX - 1



BOX - 2



BOX - 3



BARCELONA



Mobile House Design

@BARCELONA

@VIENNA

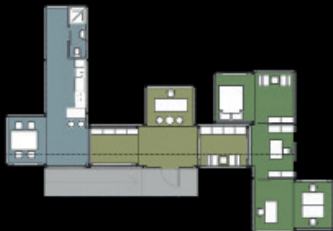
@GENOVA

Concept Design



MOBILE HOUSE

WIEN



GENOVA



These three mobile containers are specially designed with multiple functions, to be used as house or office. At the end, they became an office of a Viennese artist for September to June and they have been carried by a lorry to Genova and Barcelona to be used as a summer house.



Shopping Mall

@IRAQ

Concept Design



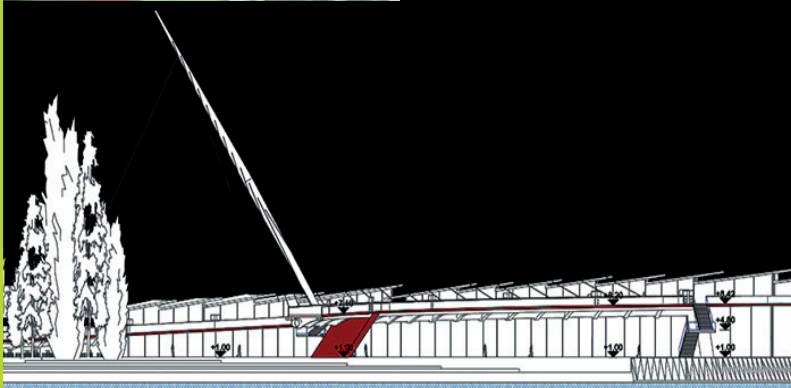
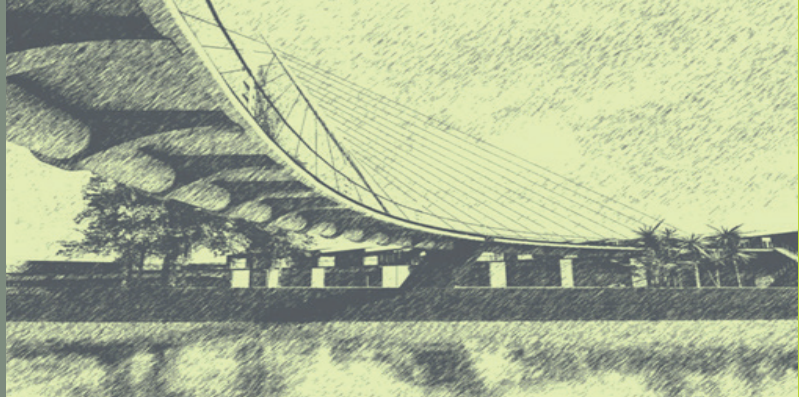
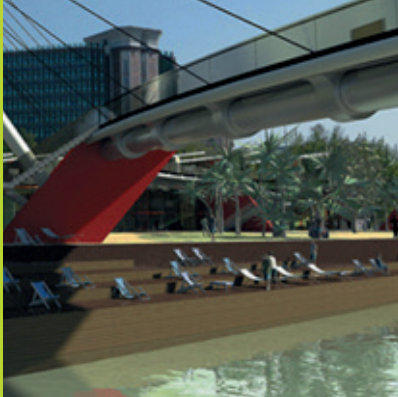


As to be one of the shopping mall in Erbil, we proposed the architectural project . The aim was to create a contrast and vibrant facade to get the attraction .



MALL FELLUJAH



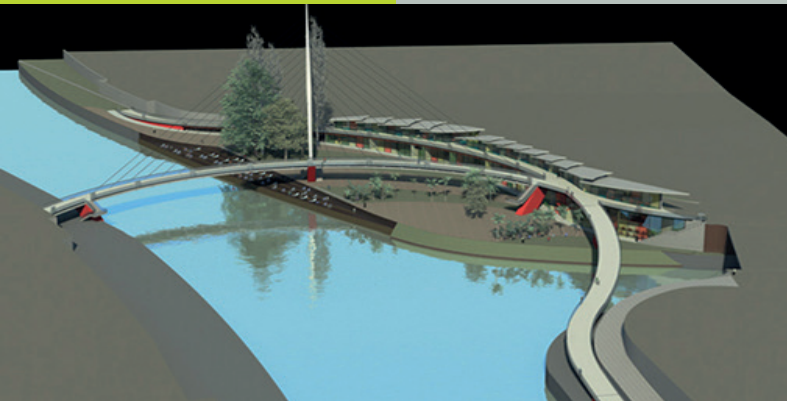
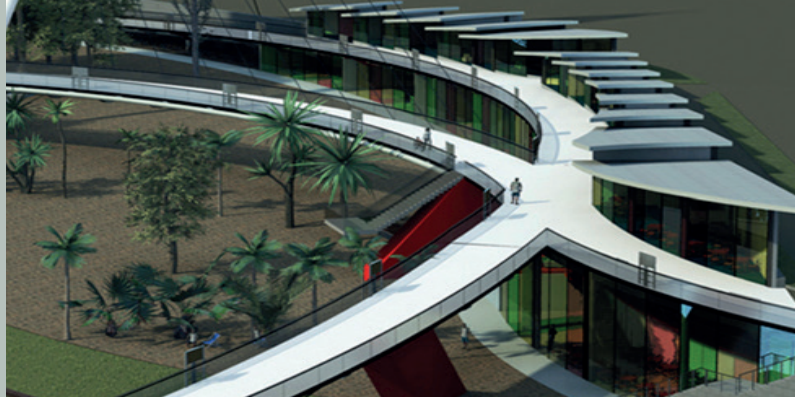


Multifunctional
Bridge Complex

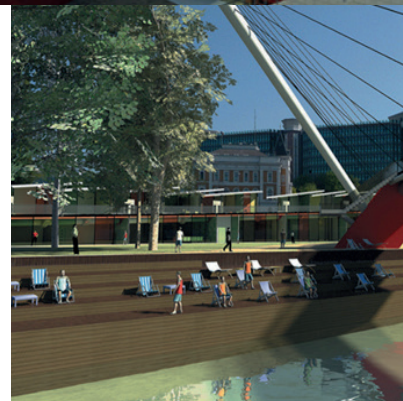
@VIENNA

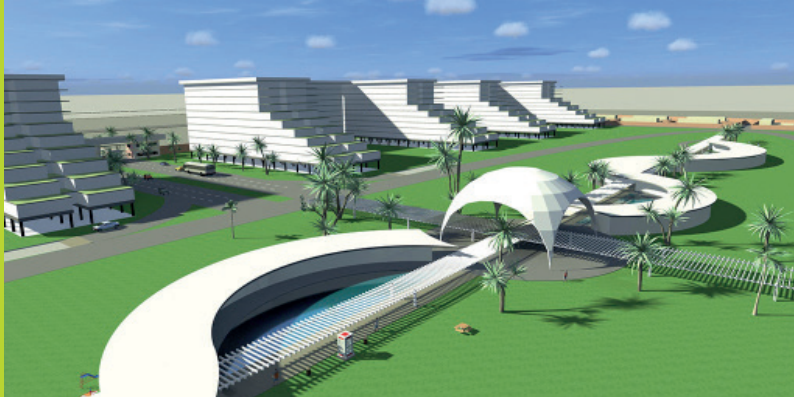
Concept Design

BRIDGE COMPLEX PROJECT

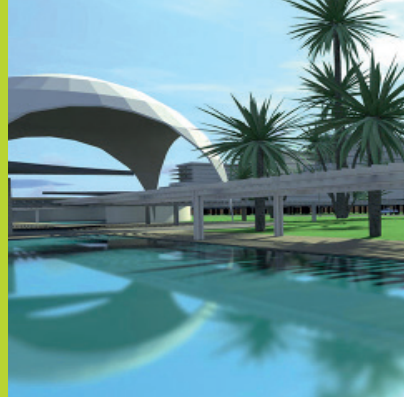


This was a multiple functioned pedestrian bridge which is designed for connecting the zone 1, zone 2, zone 3 in Wien. With the digital signages that is located according to the site slope; sale and art education areas, relaxing and entertainment zones, the project became a centre of attraction.





RIYADH RESIDENCES



Residential Complex

@RIYADH

Concept Design





In this project designed for Tahiroğlu Fırın, mainly black tones and wood panel were used together.



Bakery

100 m²

@ISTANBUL

Designed & Constructed



TAHIROĞLU
BAKERY

The aim is to show the modern face of the bakery store with simple materials.

ZOON

In this architectural office, mainly glass and mirrors are used to create a deeper perception. The colors and custom made functional furnitures are selected conveniently for reflecting the corporate identity of the firm.



ZOON ARCHITECTURE

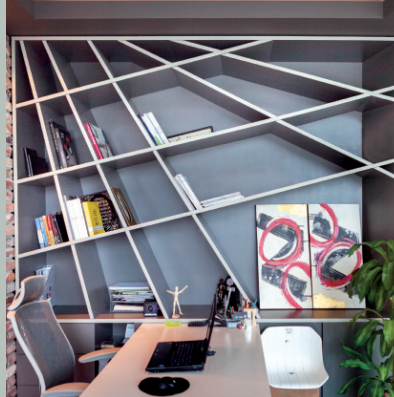


Office
70m²

Ağaoğlu My Prestige

@İSTANBUL

Designed & Constructed



The kitchen is separated from the office with 300-liters-aquarium which provides a transparency. Recycled bricks and artificial grass carpets were the other design elements.

B E F O R E
&
A F T E R

PHOTOS OF
SELECTED
ZOON
PROJECTS

BEFORE



AFTER



BEFORE



AFTER



LUVA BEAUTY

BEFORE



BEFORE



AFTER



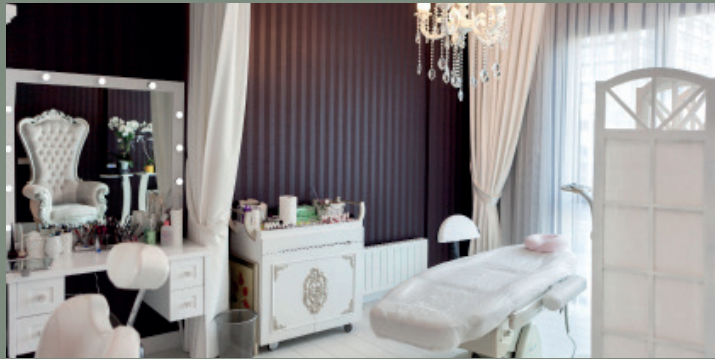
AFTER



BEFORE



AFTER



BEFORE



AFTER



LUVA BEAUTY

AFTER



BEFORE



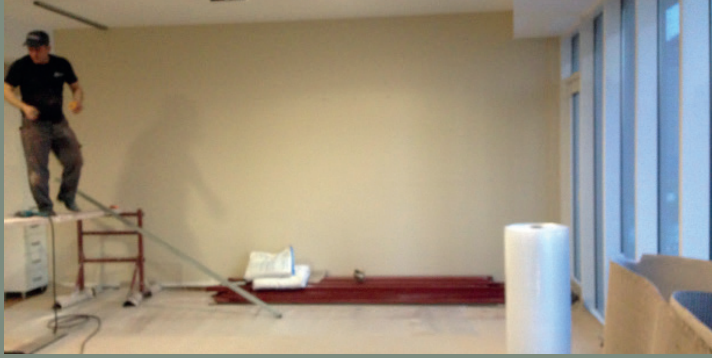
BEFORE



AFTER



BEFORE



AFTER



BEFORE



AFTER



BEFORE



AFTER



BEFORE



AFTER



BEFORE



AFTER



BEFORE



AFTER



BEFORE



AFTER



SHEYDI DIET AND CONSULTATION

AFTER



BEFORE



BEFORE



AFTER



BEFORE



BEFORE



AFTER



AFTER



BEFORE



AFTER



BEFORE



AFTER



ECA NOVAPLAST SHOWROOM

BEFORE



BEFORE



AFTER



AFTER



BEFORE



BEFORE



AFTER



AFTER



BEFORE



AFTER



BEFORE



AFTER



EKA AKSIMUM SHOWROOM

BEFORE



BEFORE



AFTER



AFTER



BEFORE



BEFORE



AFTER



AFTER



ECA AKSIMUM SHOWROOM

BEFORE



AFTER



BEFORE



AFTER



AFTER



BEFORE



AFTER



BEFORE



BEFORE



AFTER



BEFORE



AFTER



STONEFLY TEŞHIKİYE SHOWROOM

BEFORE



AFTER



STONEFLY ŞİŞLİ SHOWROOM

BEFORE



BEFORE



AFTER



AFTER



BEFORE



BEFORE



AFTER



AFTER



STONEFLY ŞİŞLİ SHOWROOM

AFTER



BEFORE



AFTER



BEFORE



BEFORE



BEFORE



AFTER



AFTER



CONTENTS

- | | | | |
|-----|---|-----|---|
| 010 | Osman Sinav House, Istanbul | 040 | Eca Mostra Convegno 2018, Milano |
| 014 | Eca Serel Akış Yapı Showroom 2018, Istanbul | 042 | Twin House, Vienna |
| 016 | Novus House, Vienna | 044 | Eca Serel Unicera 2018, Istanbul |
| 018 | Eca Serel Unicera 2019, Istanbul | 046 | Sheydi Diet and Consultation Center, Istanbul |
| 020 | Luva Beauty , Istanbul | 048 | Container Hotel Reykjavik, Iceland |
| 022 | Luva Academy, Istanbul | 050 | Container Hotel Vik I Myrdal, Iceland |
| 024 | Luva Fit, Istanbul | 052 | OMSK Carbon Office, Istanbul |
| 026 | Eca Serel Novaplast Showroom, Adana | 054 | Drn House, Istanbul |
| 028 | Grohe Stand Unicera 2019, Istanbul | 056 | Elif Çolak House, Istanbul |
| 030 | Okisan Showroom & Office, Istanbul | 058 | Acr House, Istanbul |
| 034 | Eca Serel Ish 2019, Frankfurt | 060 | Merve Çolak Dereli House, Istanbul |
| 036 | Eca Ish 2019, Frankfurt | 062 | My Coach Vip Fitness & Pilates, Istanbul |
| 038 | Dekon Student Residences, Georgia | 064 | Elmor Aksimum Showroom, Istanbul |

- 068 Eca Serel Dost Boya Showroom, Ankara
- 070 Bbk House, Istanbul
- 072 Alişiroğlu Law Firm, Istanbul
- 074 Toyota Head Office, Istanbul
- 076 Emas Sodex 2018, Istanbul
- 078 Eca Serel The Big5 2017, Dubai
- 080 Eca Serel Ideobain 2017, Paris
- 082 Concept Hotel Designs, Istanbul
- 084 Dormakaba Turkey Build 2017, Istanbul
- 086 Eca Serel Unicera 2017, Istanbul
- 088 Kronfuss House, Vienna
- 090 Eca Serel Sodex 2017, Istanbul
- 092 A.R.P.C Shazand Petrochemical Co. Plasteurasia 2017
- 094 JPC Petrochemical Co. Plasteurasia 2017
- 096 Tabriz Petrochemical Co. Plasteurasia 2017
- 098 Carglass Vip Lounge, Istanbul
- 100 Honda Motoshow 2017, Istanbul
- 102 Jaluzicam Architect@work 2017, Istanbul
- 103 Dormakaba Architect@work 2016, Istanbul
- 104 Eca Serel Unicera 2016, Istanbul
- 108 Eca Serel The Big5 2016, Dubai
- 110 Jolly Tour Emitt 2016, Istanbul
- 112 Amir Kabir Petrochemical Co. Plasteurasia 2016, Istanbul
- 114 Doğuş Automotive, Istanbul
- 116 Nissan Head Office, Istanbul
- 118 Zerafet Restaurant, Istanbul
- 120 Eftalya Balık Fish Restaurant, Istanbul

CONTENTS

- | | | | |
|-----|--|-----|-------------------------------------|
| 122 | Honda Motoshow 2016, Istanbul | 146 | Omsk Carbon Rubber Fair 2016 |
| 124 | Versace 19-69 Mall of Istanbul, Istanbul | 147 | Tekyaz Maktek 2016, Istanbul |
| 126 | Versace 19-69 Aymod 2016 | 148 | Eca Serel Cologne Showroom, Cologne |
| 128 | Versace 16-69 Fatih Showroom, Istanbul | 150 | Eca Ish 2015, Frankfurt |
| 130 | Distanbul Showroom, Istanbul | 152 | Eca Serel Ish 2015, Frankfurt |
| 132 | Stonefly Şişli Showroom, Istanbul | 154 | Tekdurmaz House, Istanbul |
| 134 | Stonefly Teşvikiye Showroom, Istanbul | 156 | Mustafa Erten House, Istanbul |
| 136 | Stonefly Florya Showroom, Istanbul | 158 | Eca Serel The Big5 2015, Dubai |
| 138 | Stonefly Ankara Showroom, Ankara | 160 | Eca Serel Cersai 2015, Bologna |
| 140 | Tekyaz Office Lounge Şişli, Istanbul | 162 | Şişmanoğlu Bakery, Istanbul |
| 142 | Kaya Palazzo Eca Serel Exhibition, Antalya | 163 | Telkari Restaurant, Istanbul |
| 144 | Schubert House, Vienna | 164 | Güney Bakery, Istanbul |
| 145 | Haydn House, Vienna | 166 | Eca Serel Cersai 2014, Bologna |

- 168 Eca Serel Showroom, Cambodia
- 170 Creative Beauty, Istanbul
- 172 A.G. House, Istanbul
- 174 Eks Dental Clinic, Istanbul
- 176 Sunglass Hut Fashion Week 2014, Istanbul
- 178 CarrefourSA Bookstore İçerenköy, Istanbul
- 180 VBH Avrasya Pencere, Istanbul
- 182 BJK Nevzat Demir Social Complex, Istanbul
- 184 Çağrı Jewelry, Tekirdağ
- 186 Empire's Jewelry, Istanbul
- 187 Cotecna Maden 2018, Istanbul
- 188 Wrangler Aymod 2013, Istanbul
- 190 Stonefly Aymod 2013, Istanbul
- 192 La Cucina il Aida, Istanbul
- 194 Mobile House Concept Design, Vienna
- 196 Mall Fellujah, Iraq
- 198 Bridge Complex Project, Vienna
- 200 Riyadh Residences, Riyadh
- 201 Tahiroğlu Bakery, Istanbul
- 202 Joule Energy
- 204 Zoon Architecture
- 206 Display Stands
- 208 Before & After Photos of Selected ZOON Projects

©2021 by Zoon Architecture.

Published in June 2021

Zoon Architecture

Barbaros Mah. Ağaođlu My Prestige No:106

İstanbul / Türkiye

t: (+90) 216 6 888 444

e: info@zoonmimarlik.com

All rights are reserved.

No part of this publication may be reproduced, stored in a retrieval system or transmitted in any form or by any means electronic, mechanical, photocopying, recording or any information storage and retrieval system, without prior permission in writing from the publisher.

ARTZOOON

T R E V I S O I S T A N B U L
interiors & architectural design group

ITALY, VIA FONTANE, 13- 31100 TREVISO t. +39 388 921 82 69

TURKIYE, BARBAROS MAH. AĐAOĐLU MY PRESTIGE NO:106 ATAŐEHİR / ISTANBUL t. +90 216 688 84 44 f. +90 216 688 84 45

e. info@zoonmimarlik.com w. www.zoonmimarlik.com i. www.instagram.com/zoonmimarlik/

ARTZOOON

T R E V I S O I S T A N B U L
interiors & architectural design group

ITALY, VIA FONTANE, 13- 31100 TREVISO t. +39 388 921 82 69

TURKIYE, BARBAROS MAH. AĐAOĐLU MY PRESTIGE NO:106 ATAŐEHİR / ISTANBUL t. +90 216 688 84 44 f. +90 216 688 84 45

e. info@zoonmimarlik.com w. www.zoonmimarlik.com i. www.instagram.com/zoonmimarlik/